

MEASURING TECHNOLOGY

measure • check • automate

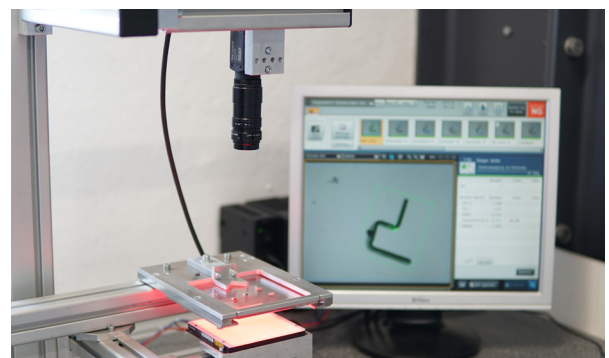
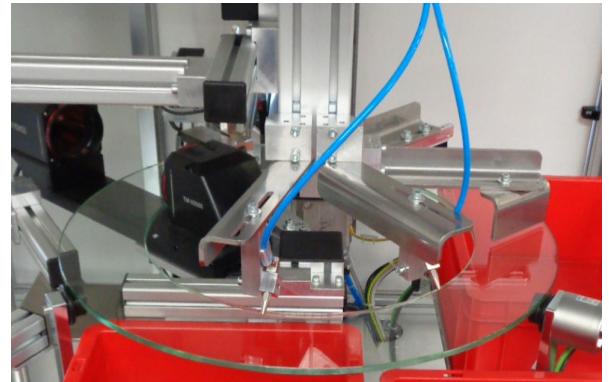
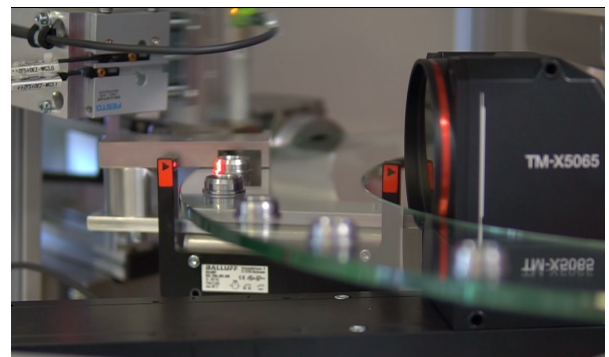
MEASURING TECHNOLOGY from IFSYS are sorting systems with opto-electronic sensors and cameras. The products to be inspected are brought into the detection range of the image processing system via a feed system. In most cases, the use of a glass plate is the ideal solution. However, it is also possible to use camera belts or free fall. The inspection criteria of the products can be dimensional accuracy, scratches on the surface, bending and other quality criteria.

It is possible to have a feeding system with a glass plate as the smallest unit or a complete stand-alone system including a camera system

Details

- testing and measuring tasks with transmitted and incident light for geometry measurements or surface testing
- form and position evaluations
- 360° inspection - also possible in free fall
- different measurements and inspections through the use of multiple cameras
- classification of the result evaluation
- conveying capacity: part-dependent
- self-sufficient, depending on the degree of automation
- manual inspection and measuring stations through to automated inspections and measurements possible
- optional: use of AI

Examples of application:



Technical information on the measuring part:		
All surfaces and geometries		
min. permissible size	mm	4 x 1 x 1
max. permissible size	mm	80 x 30 x 30
weight	g	0,1 - 1000

We will be happy to assist you in selecting your individual solution. Please contact our sales staff for more information.

© IFSYS Integrated Feeding Systems GmbH - Deutschland

IFSYS North America, Inc.
2240 Highway 292
Inman, SC 29349, USA

Office: +1.864.472.2222
or
contact@ifsys.us